

BASE UNIT

- Fire suppression system
- 24 V system, 2 x 1150 amp batteries, 110 amp alternator
- 3 LED worklights on cab, 2 x on hood and 1 x inside engine compartment
- Reinforced cooling system
- Climate controlled cabin

DIESEL ENGINE CUMMINS L9

- 261kW (350CV) @ 1800 RPM
- In-line 6, turbo w/wastegate
- 8.9L (543 cu. in.)
- Tier 4 Final, NA (Stage 5, EU)

ACCESSIBILITY

Through the hood, access to the diesel engine from two sides. Once opened, the hood turns into a platform for component service. All filtration systems are accessible for cartridge replacement. Easy access to batteries when needed.

ELECTRICAL SYSTEM

Voltage	24V
Alternator	110amp
Batteries	2 x 1150amp
Lighting	LED
Travel Alarm	YES

COOLING SYSTEM

Aluminum side-by-side radiators, oil, water and air cooler, hydraulically driven fan, variable speed, reversible rotation.

HYDRAULIC SYSTEM

The main block is the central point of all hydraulic functions for the machine. The new Linde block offers an integrated system of the 8 main valves as well as the solenoid valves. This new block directly controls the pressure and also allows the reduction of connections and hoses. The integration of this new block allowed reconfiguration of the positioning; the block is now positioned higher which increases the space between the block and rotation unit.



WWW.ELTEC.TECH

CABIN

Cabin	ROPS – FOPS – OPS certified, 3 emergency exits, climb on 8 anti-vibration pads significantly reducing vibrations
Vision	Best in class for peripheral vision, front window in full length polycarbonate, 32mm / 1.25" thick
Console	2 complete consoles to the right of the operator
Control System	Electronic steering system. Load management and response of the main and attachment pumps configurable from the machine interface, calibration possible to meet the specific use of the machine. Each function is configurable by the operator and multiple operators can be stored in memory, ability to duplicate the operator. New electronic management of oil sharing between functions or between attachments, firmness of rotation, aggressiveness of the machine, all configurable by operator. Interface for improved diagnostics with display of hydraulic pressures in real time,
Screen Interface	Robust screen, waterproof navigation buttons, user-friendly interface
Control Sticks	Electric, seat armrest mounted
Climate Control	Complete, several adjustable louvers at strategic locations for operator comfort
Seat	Size options, air suspension, multiple adjustments, heated
Multi-media receiver	Multilingual, AM/FM, bluetooth, iphone compatible, integrated alexa, USB port, Sirius (subscription not included)

HYDRAULIC SYSTEM

	FB317BL	FH317L
Main pump 1, piston type, Load sensing, Electronic load control	370L/min (98gpm US)	370L/min (98gpm US)
Main pump 2, piston type Load sensing. Slave hydraulic load control	238L/min (63 gpm US)	238L/min (63 gpm US)
Attachement pump, piston type, pressure compensated	185L/min (49 gpm US)	
Attachement pump, piston type, Electronically flow and pressure controled		370L/min (98gpm US) OPTION up to 440lpm (116gpm US) by sharing main pump
Saw pump	131L/min (35gpm US)	
Oil filter	1 main return filter, return with bypass, 1 sump drain filter, suction strainer	1 main return filter, return with bypass, 1 sump drain filter, suction strainer
Main hydraulic block	Linde	Linde
FRS - Flow Recovery System	Flow recovery system assisted by kinetic energy, allowing faster in-out boom and mast cycles using less flow, which allows better distribution of fluid to the rest of the functions. System exclusive to the Eltec B series.	Flow recovery system assisted by kinetic energy, allowing faster in-out boom and mast cycles using less flow, which allows better distribution of fluid to the rest of the functions. System exclusive to the Eltec B series.

UPPER STRUCTURE

Type of rotational system - Single swing unit, 2 stage planetary reduction	Single rotation unit, 2 stage reduction to planetary (5% torque increase vs A series)
Swing Drive Speed	6.5 RPM
Swing Drive Bearing diameter	1339mm / 4'-5", Internal gears in grease bath

ELTEC  
FB/FH 317B SERIES

FELLER HARVESTER  
FELLER BUNCHER

POWERFUL  
RELIABLE  
BUILT FOR FORESTRY

LEVELLING SYSTEM - TILT ANGLES

	FB	FH
Front (degree)	20°	20°
Sides to Side (degree)	15°	15°
Back (degree)	3°	3°

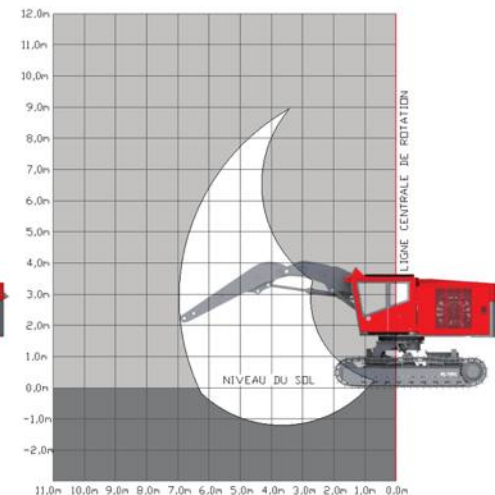
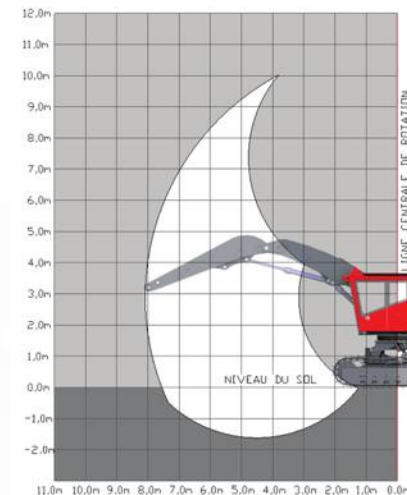
UNDERCARRIAGE CHASSIS

Size	D7
Track Chain	216mm / 8.5"
Number of Track Links (per side)	50
Lower Rollers (per side)	9
Carrier Slides/Rollers (per side)	1
High Travel Speed - Forward/Reverse	3,6 km/hr - 2.2 mph
Low Travel Speed - Forward/Reverse	1.7 km/hr - 1 mph
Tractive Effort Normal	445 kN/100000 lbf

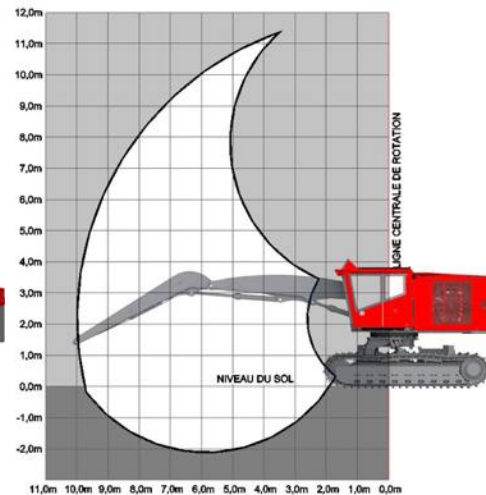
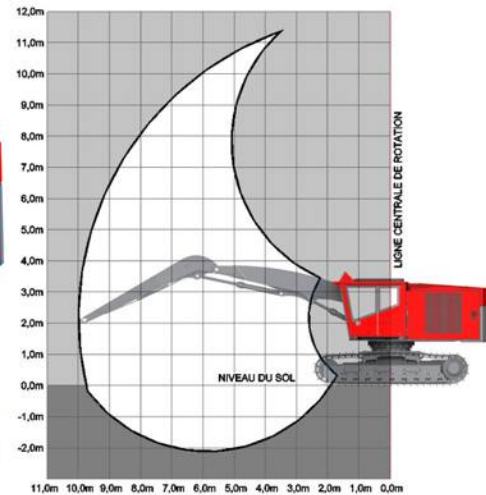
ELTEC BY LOGGERS FOR LOGGERS ELTEC BY LOGGERS FOR LOGGERS ELTEC BY LOGGERS FOR LOGGERS



## 317B SERIES - FB + FBL



## 317B SERIES - FH + FHL

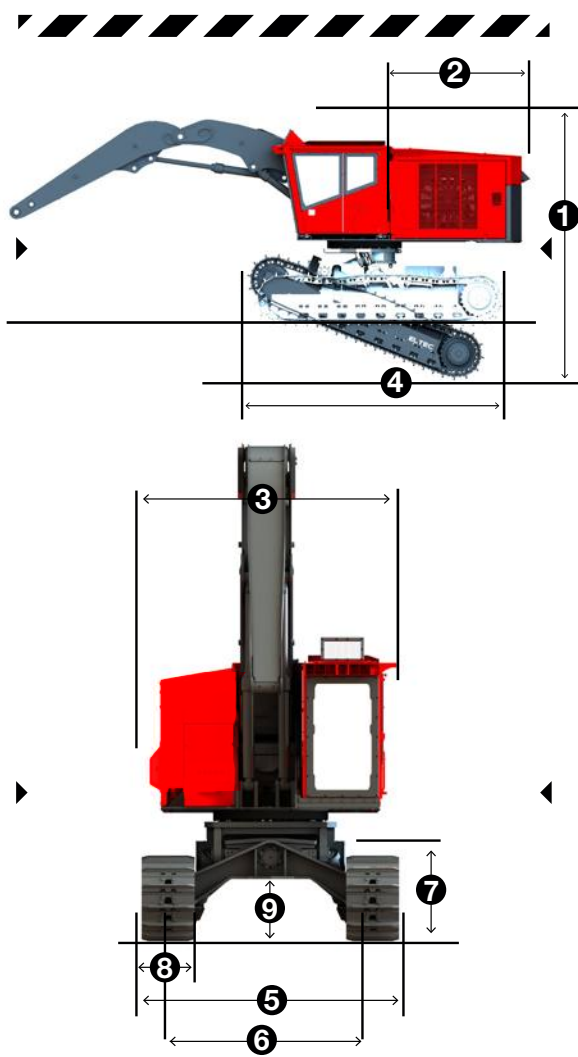


WWW.ELTEC.TECH

**ELTEC**  
FB/FH 317B SERIES

FELLER HARVESTER  
FELLER BUNCHER

**POWERFUL**  
**RELIABLE**  
BUILT FOR FORESTRY

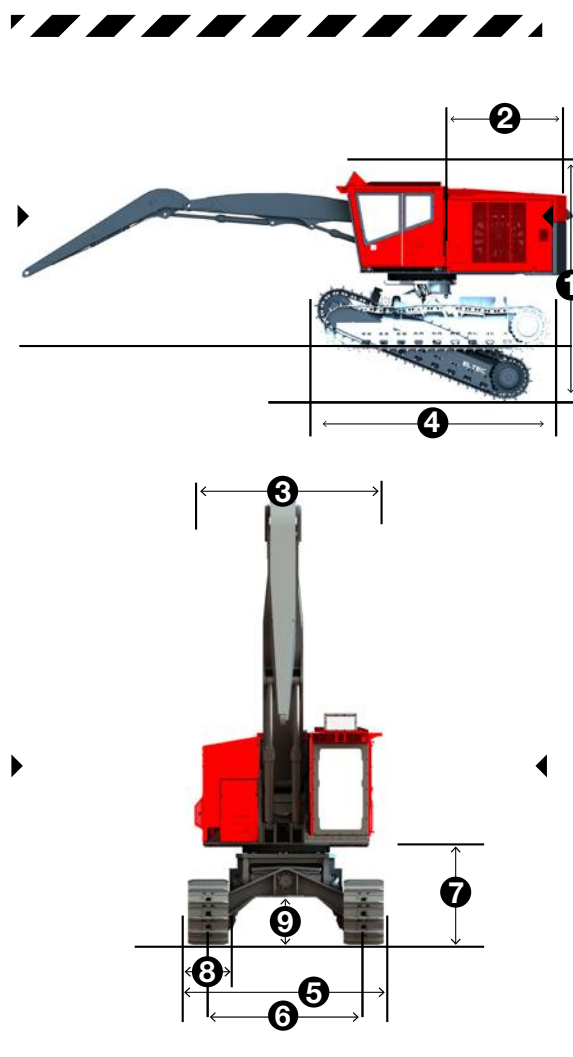


REFILL CAPACITIES	FB317BL	FBL317BL
Diesel Reservoir	1 117L / 299 USgal	1 117L / 299 USgal
Hydraulic Reservoir	351L / 92 USgal	351L / 92 USgal
Auxiliary hydraulic reservoir	53L / 15 USgal	53L / 15 USgal
DEF Reservoir	111L / 29.5 USgal	111L / 29.5 USgal

MACHINE DIMENSIONS	FB	FBL
1 Overall Height	3429mm / 11'-3"	3700mm / 12'-2"
2 Tail Swing (From Swing Center)	3606mm / 11'-10"	3606mm / 11'-10"
3 Upper Structure Overall Width	3314mm / 10'-10"	3314mm / 10'-10"
4 Overall Track Length	5194mm / 17'-1"	5194mm / 17'-1"
5 Overall Track Width	3454mm / 11'-4"	3 454mm / 11'-4"
6 Track Gauge	2743mm / 9'-0"	2743mm / 9'-0"
7 Track Height	1220mm / 4'-0"	1220mm / 4'-0"
8 Track Width	711mm / 2'-4"	711mm / 2'-4"
9 Minimum Ground Clearance	870mm / 2'-10"	870mm / 2'-10"
Machine weight**	36860kg / 81100lbs	41410kg / 91100lbs
Ground Pressure Single Grouser (711mm / 2'-4")	(61,3 kPa / 8,9 psi)	(68,9 kPa / 10,0 psi)

\*\*basic, without skylight and accessories

BOOM SYSTEM PERFORMANCE	FB	FBL
Standard Cylinders	135mm / 5.3"	135mm / 5.3"
Optional Cylinders	125mm / 4.9"	125mm / 4.9"
FB28 Boom Length (min/max)	4,4m (14'6") / 8,6m (28'4")	4,4m (14'6") / 8,6m (28'4")
FB28- Bare Pin Lifting Capacity (standard cylinder)	4,6m (15') = 18320 kg (40300 lb)	6,1m (20') = 13270 kg (29200 lb)
Full reach	8865 kg (19500 lb)	8865 kg (19500 lb)
FB33- Boom Length (min/max)	5,0m (16'5") / 10,0m (32'9")	5,0m (16'5") / 10,0m (32'9")
FB33- Bare Pin Lifting Capacity (standard cylinder)	4,6m (15') = 16450 kg (36200 lb)	6,1m (20') = 13000 kg (28600 lb)
	7,6m (25') = 9000 kg (19800 lb)	
Full reach	6205 kg (13650 lb)	6205 kg (13650 lb)



REFILL CAPACITIES	FH317BL	FHL317BL
Diesel Reservoir	1 117L / 299 USgal	1 117L / 299 USgal
Hydraulic Reservoir	351L / 92 USgal	351L / 92 USgal
Auxiliary hydraulic reservoir	53L / 15 USgal	53L / 15 USgal
DEF Reservoir	111L / 29.5 USgal	111L / 29.5 USgal

MACHINE DIMENSIONS	FH	FHL
1 Overall Height	3429mm / 11'-3"	3700mm / 12'-2"
2 Tail Swing (From Swing Center)	3606mm / 11'-10"	3606mm / 11'-10"
3 Upper Structure Overall Width	3314mm / 10'-10"	3314mm / 10'-10"
4 Overall Track Length	5194mm / 17'-1"	5194mm / 17'-1"
5 Overall Track Width	3454mm / 11'-4"	3 454mm / 11'-4"
6 Track Gauge	2743mm / 9'-0"	2743mm / 9'-0"
7 Track Height	1220mm / 4'-0"	1220mm / 4'-0"
8 Track Width	711mm / 2'-4"	711mm / 2'-4"
9 Minimum Ground Clearance	870mm / 2'-10"	870mm / 2'-10"
Machine weight**	36860kg / 81100lbs	41410kg / 91100lbs
Ground Pressure Single Grouser (711mm / 2'-4")	(61,3 kPa / 8,9 psi)	(68,9 kPa / 10,0 psi)

\*\*basic, without skylight and accessories

BOOM SYSTEM PERFORMANCE	FH	FHL
Standard Cylinders	135mm / 5.3"	135mm / 5.3"
Optional Cylinders	125mm / 4.9"	125mm / 4.9"
FH33- Boom Length (min/max)	3,7m (10'2") / 10,2m (33'7")	3,7m (10'2") / 10,2m (33'7")
FH33- Bare Pin Lifting Capacity (standard cylinder)	6,1m (20') = 12955 kg (28500 lb)	9,1m (30') = 8130 kg (17880 lb)
Full reach	4955 kg (10900 lb)	4955 kg (10900 lb)
FH30- Boom Length (min/max)	2,8m (9'2") / 9,4m (30'11")	2,8m (9'2") / 9,4m (30'11")
FH30- Bare Pin Lifting Capacity (standard cylinder)	7,6m (25') = 11760 kg (25875 lb)	6,1m (20') = 13690 kg (30125 lb)
Full reach	9045 kg (19900 lb)	9045 kg (19900 lb)



**ELTEC BY LOGGERS FOR LOGGERS**

**ELTEC BY LOGGERS FOR LOGGERS**

**ELTEC BY LOGGERS FOR LOGGERS**